

AXIS MPEG4/H.264 Streams Specifics

Motion Detection for AXIS MPEG4/H.264 Streams

To Implement “Alarm-on-motion” and/or “Motion only” features in the DETEXI Network Video Recorder (NVR) for AXIS MPEG4/H.264 video streams you need to setup motion detection inside the AXIS IP device (video server/camera). This guide assumes that you know how to do initial configuration of AXIS camera.

MANUAL SETUP

You have to setup “**Advanced Scripting**” and “**Motion Detection**” features inside the AXIS IP device.

1. In the **AXIS camera Setup** select “**System Options — Advanced — Scripting**” to go inside scripting (Fig 1).

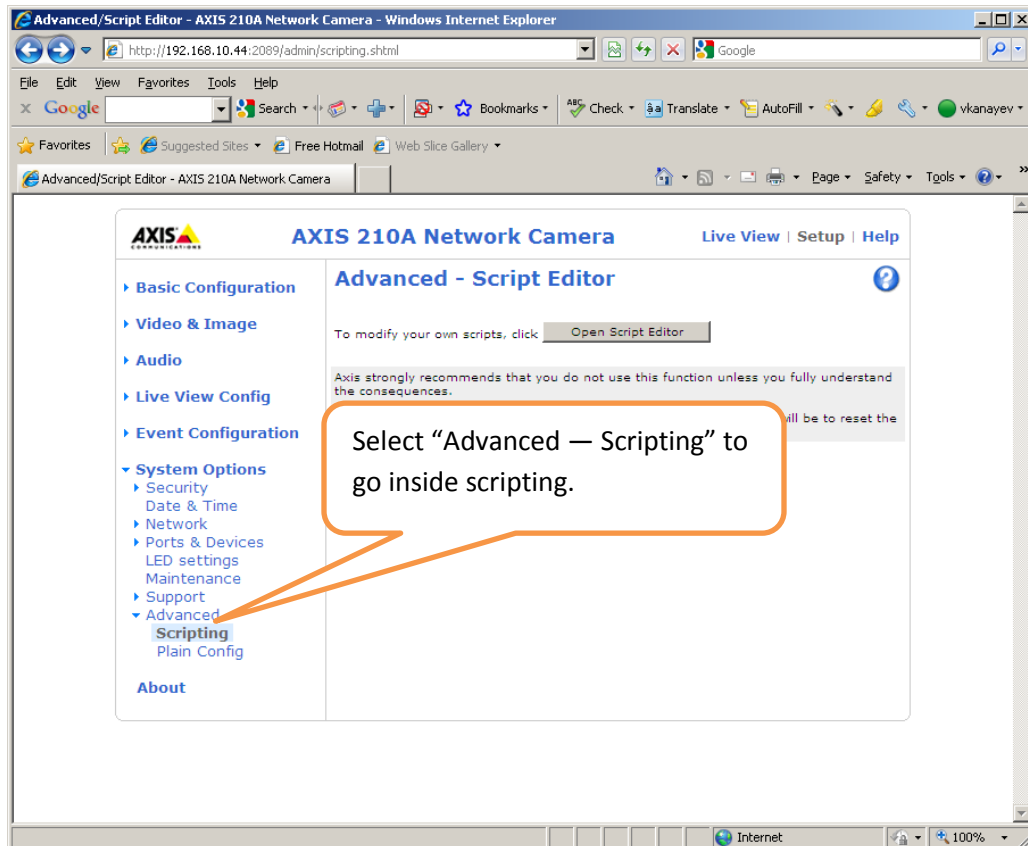


Fig 1. AXIS camera Setup — System Options (*Go inside scripting*).

2. Select “Image” group and make changes shown on Figure 2. Checkmark “Trigger data enabled”, “Motion detection enabled”, “Motion level enabled” and “Video loss enabled” check boxes. Save page changes.

Image

Image

Referrers enabled:

Referrers:

Max viewers: [0..20]

Nbr of configs:

Overlay path:

Privacy mask type:

Date format:

Own date format:

Own date format enabled:

Time format:

Own time format:

Own time format enabled:

Time resolution:

Trigger data enabled:

Summary:

Position:

Image I0 TriggerData:

IO enabled:

Motion detection enabled:

Motion level enabled:

Video loss enabled:

User triggers:

Save page changes:

Fig 2. AXIS camera Setup — Scripting (Image group setup).

3. In the “**Event Configuration – Motion Detection**” form select Region of Interest and motion detection parameters as shown on Figure 3. Motion detection is used to generate an alarm whenever motion occurs (or stops) in the video image. Once configured, the motion detection windows will appear in the list of available triggers, for triggering events.

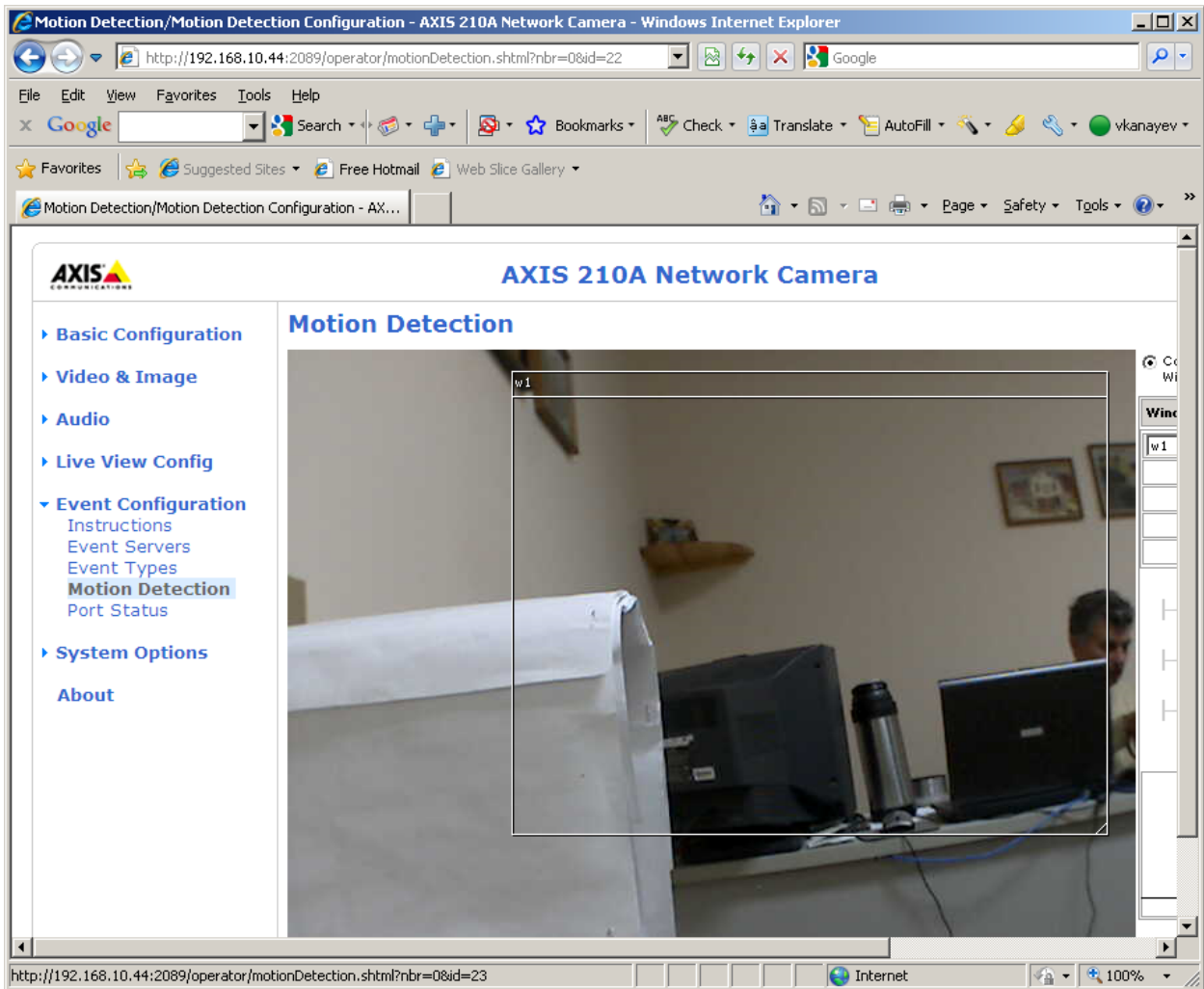


Fig 3. AXIS camera Setup — Motion Detection (*Setup Region of Interest*).

Note

- *Using the motion detection feature may decrease the camera’s overall performance.*
- *The motion detection functionality is disabled during pan, tilt, zoom movement, and is enabled when you return to the overview view.*

AUTOMATIC SETUP

DETEXI NVR Control Center provides a possibility to help you setting up motion parameters inside the AXIS IP devices streaming MPEG4/H.264 video.

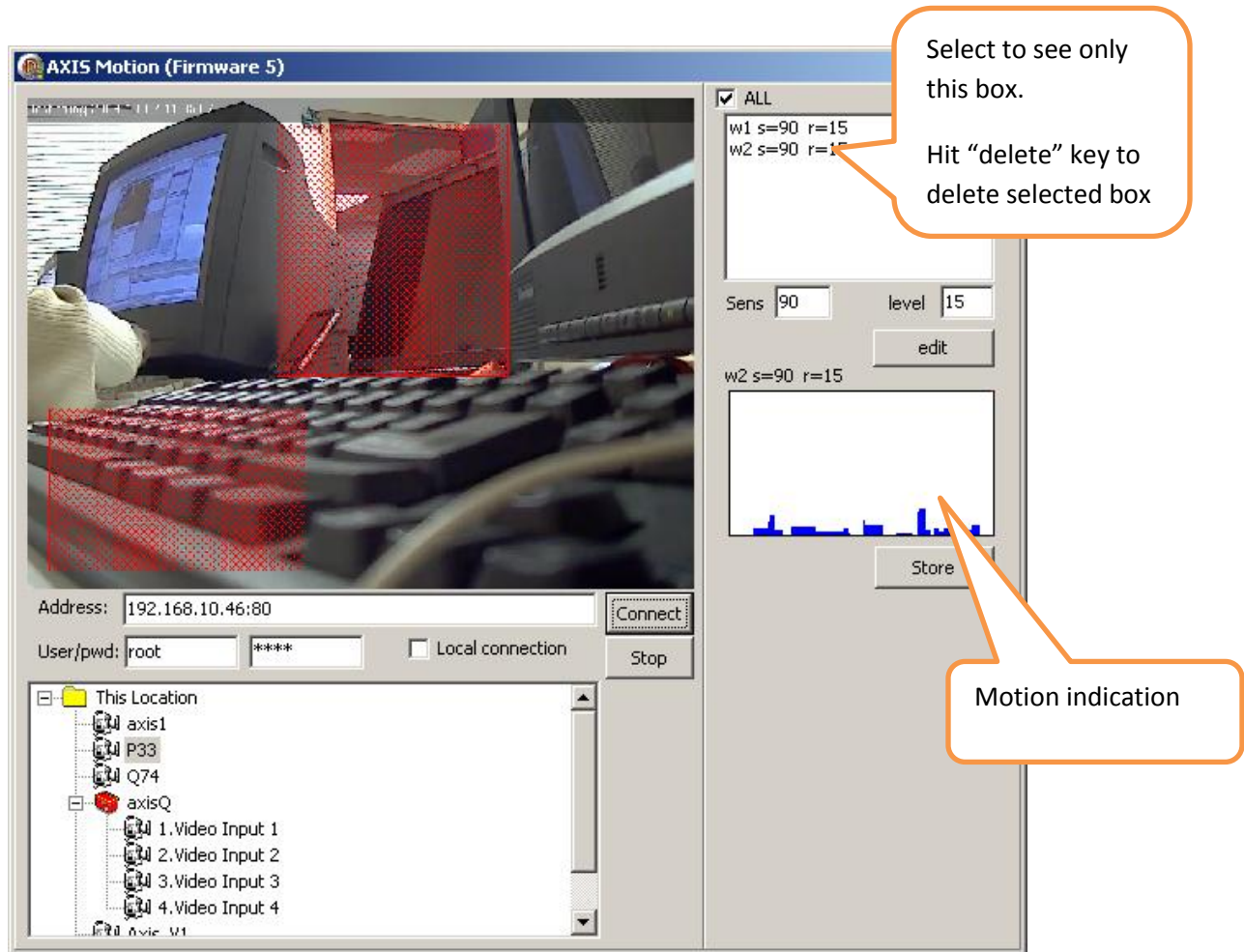


Fig 4. NVR Control Center – Camera Motion Configuration panel.

1. In the **“NVR Control Center – Cameras”** select a camera from the cameras list, switch to the **“Recording”** and select video **“Format”** MPEG4 or H.264 – **“Launch Camera Motion Configuration”** button will appear. Click the button to access motion configuration panel (Fig 4).
2. Select (double-click) video-input/camera you are going to set and click **“Connect”**.
3. Draw region of interest boxes and set **“Sensitivity”** and **“Level”** parameters for each box.
4. After you have done all settings press **“Store”** button.

When everything is stored you can fine tune settings by using “motion indication” window. If window is selected in windows list “motion indication” shows motion only in this window. If “All” is selected – “motion indication” shows motion only in all windows.