

DETEXI 6 Backup/Restore

It is possible to Backup/Restore the NVR Control Center configuration settings. Backup creates safety copy of the NVR configuration database, so if a customer loses his system, the configuration information can be easily recovered without going through the user interface. Performing regular backups should be considered one of a responsible system administrator's top priorities.

The default location of the DETEXI 6 system files has been changed.

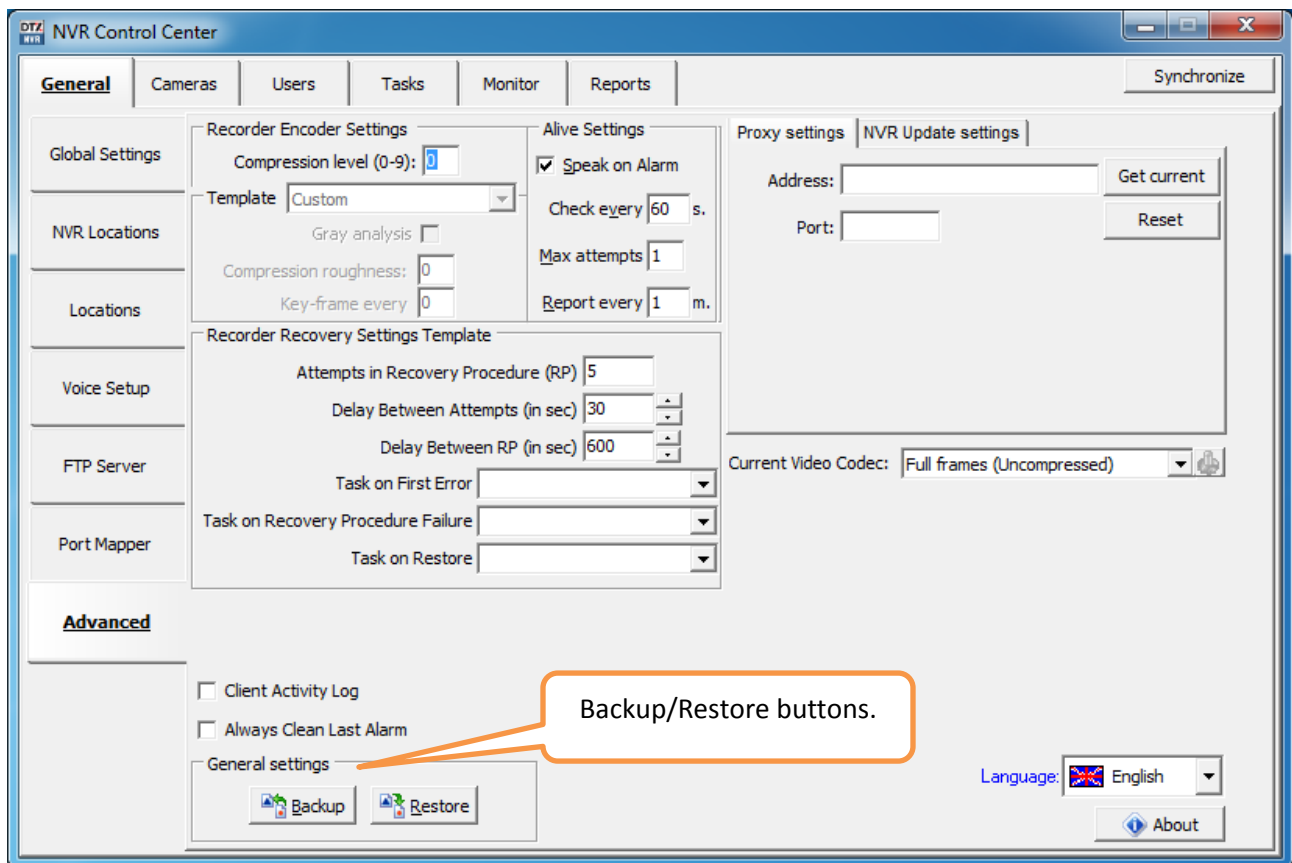


Fig 1. NVR Control Center — General — Advanced tab (*Backup/Restore buttons*).

By default, NVR Control Center configuration database — **NVR.MDB** file — is located:

For Windows XP — *C:\Documents and Settings\All Users\Application Data\CNSG Inc\NVR*

For Windows 7 — *C:\ProgramData\Application Data\CNSG Inc\NVR*

Backup

When the system is set, in the NVR Control Center **“General — Advanced”** click **“Backup”** button — all configuration settings will be saved in the NVR.MDB file that should be copied in a safe place (Fig 1).

Note

- *In order to see the NVR.MDB file **“Show hidden files and folders”** option should be set for your Windows Explorer.*

Restore

To restore the NVR configuration settings (including Cameras List), place saved NVR.MDB file to the appropriate location, and in the NVR Control Center **“General — Advanced”** click **“Restore”** button.