



DETEXI IP VIDEO SECURITY

An abstract graphic composed of several overlapping, semi-transparent 3D rectangular blocks in shades of light blue and grey, creating a sense of depth and perspective. The blocks are arranged in a way that suggests a path or a sequence of steps.

INSTALLATION GUIDE

About This Manual

This guide is intended for administrators and users of the DETEXI IP Video Security, and is applicable for software release 6.0 and for higher versions in general. It covers the installation of DETEXI Server and DETEXI Client as well as instructions for using and managing the DETEXI on your network. Previous experience of networking will be of use when using this product. Later versions of this manual will be posted to the DETEXI website, as required.

DETEXI IP Video Security Installation Guide Release 6.25 Part No: DTX6.25-UG-I Copyright© UCIT Online, September 2010
--

Install DETEXI Software

DETE XI IP Video Security is a complete monitoring and recording system for use with network cameras and video servers. The application provides quick and easy access to all connected and configured cameras, recordings, inputs and outputs used in the system.

DETE XI NVR (Server) handles the communication with the cameras while **DETE XI Client** provides quick and easy access to connected and configured cameras, recordings, inputs and outputs used in the system. Multiple Clients can be connected to the same NVR. A Client can be connected to multiple NVRs.



- A background service in Windows, DETEXI NVR will start automatically upon system start-up and continue running even after the user logs out.
- All dialogs that allow control and configuration of all aspects of the DETEXI NVR are found under the **NVR Control Center** — the NVR Graphic User Interface (GUI).

Minimum Recommended Requirements

Install DETEXI software on a computer dedicated mainly for running this application. For best performance and stability these minimum requirements must be met.

Server PC

- Windows 7 Professional, 2008 R2 Server, 2003 Server, Windows Vista Business, XP Professional
- Can be installed on 64 and 32 bits Windows
- CPU: Intel Pentium 4, 2 GHz (i7 - 980X or Intel Xeon 5650 and up — for larger systems))
- RAM: 1 GB (4 GB recommended for larger systems)

Client PC

- Windows 7, 2008 Server, 2003 Server, Windows Vista, XP, Windows Media Player 11
- CPU: Intel Pentium 4 or higher, 2 GHz (Intel Core 2 Quad recommended for larger systems)
- RAM: 1 GB (4 GB recommended for larger systems)
- Screen: 1024 x 768 (or higher resolution)

- Graphic card with DirectX 9.0c; Real video memory of 256 MB Important! Use latest graphic card driver

Network, Storage

- 100 Megabit Network (Gigabit Network recommended for larger systems)
- Storage necessary will depend upon application and specifications. Camera at 1 fps in CIF takes 0.8 GB per day with 24 hours constant recording

NVR / Client Installation

1. Choose DETEXI Installation Type

If this is the first time you are installing DETEXI, you want to download the full package — **NVR Installation**, which contains all the files for DETEXI including: NVR Server, NVR Control Center, Local and Remote Client, Archive Viewer, and other modules and utilities (*at least 90.2 MB of free disk space is required*).

To get the **DETEXI NVR** installation package, first, communicate an authorized dealer in your area. You will be provided a link for downloading the latest release of DETEXI. Always use the latest version to ensure that your installation has the latest functionality and improvements.

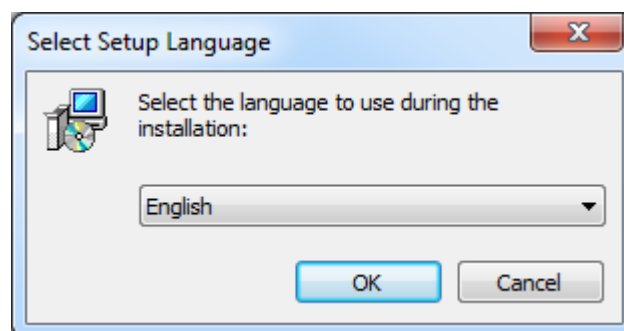
If the NVR has been already installed on another computer you may choose to install only **Remote DETEXI Client**. Remote Client Installation package can be downloaded from the DETEXI website (Product Overview) and *installed on the unlimited number of PCs for free*.

2. Download and Unpack the Application

Download the latest release of DETEXI NVR or Client. Uncompress the DETEXI files and copy them to a directory of your choice.

3. Run the DETEXI NVR (Client) Setup

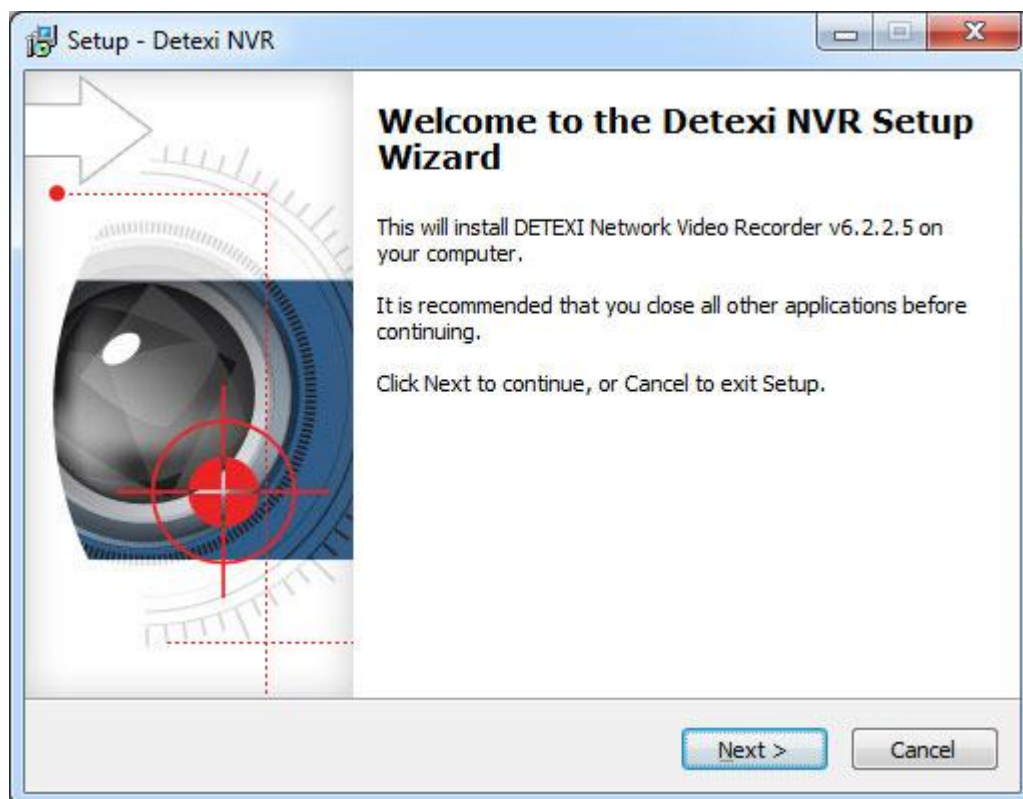
Select the preferred language to setup. Click your way through the Setup Wizard.



- By default, the DETEXI NVR components and files are installed in the C:\Program Files\CamServer folder (32-bit processor) or C:\Program Files (x86)\CamServer folder (64-bit processor).
- By default, the Remote DETEXI Client components and files are installed in the C:\Program Files\Detexi folder.
- By default, NVR Control Center configuration database — **NVR.MDB** file — is located: for Windows XP — C:\Documents and Settings\All Users\Application Data\CNSG Inc\NVR; for Windows 7 — C:\ProgramData\Application Data\CNSG Inc\NVR
- **Firewall** — DETEXI NVR Server accepts incoming network requests from DETEXI Clients that can be located outside of your local network. If your computer has a firewall installed it must be configured to allow incoming network requests.

DETEXI NVR Setup

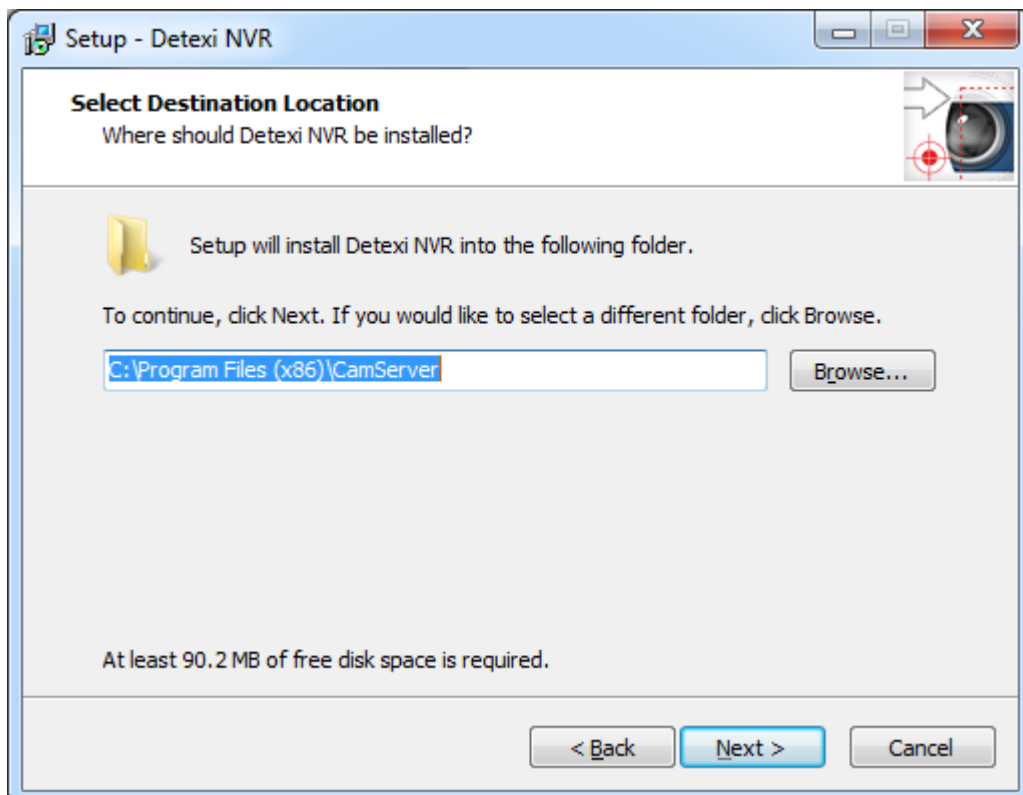
1. Run the DETEXI NVR Setup wizard



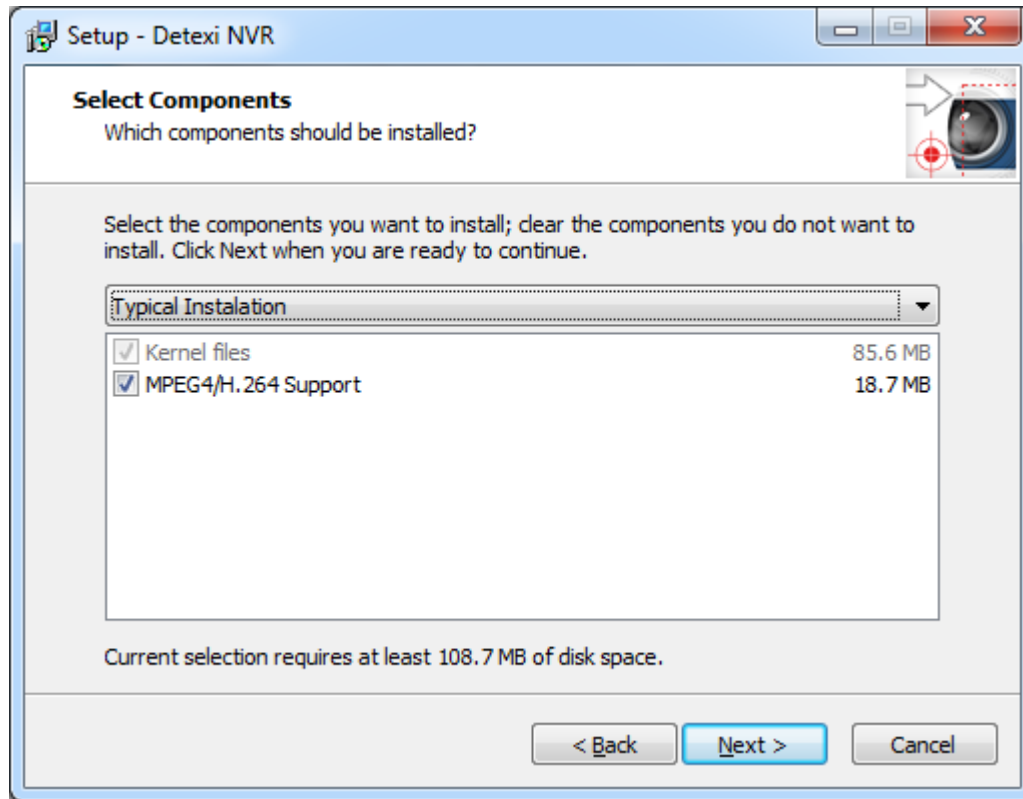
2. Read the license agreement information. Select **I accept the agreement** and click **Next**.



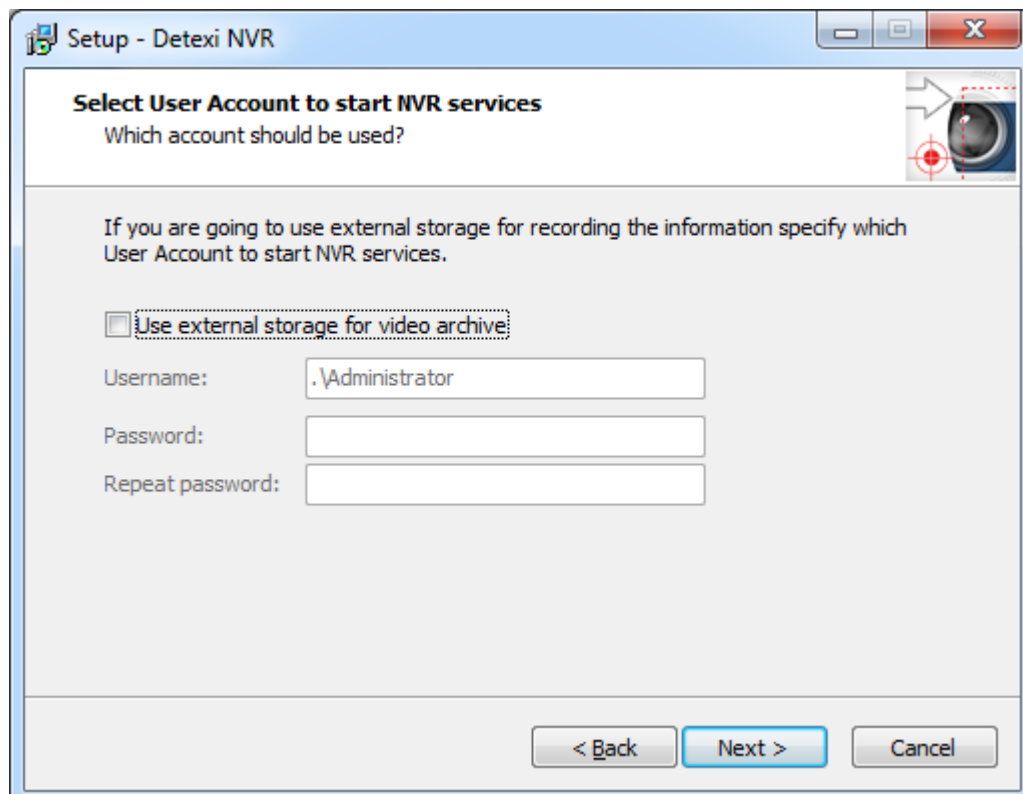
3. Select DETEXI NVR location and click **Next**.



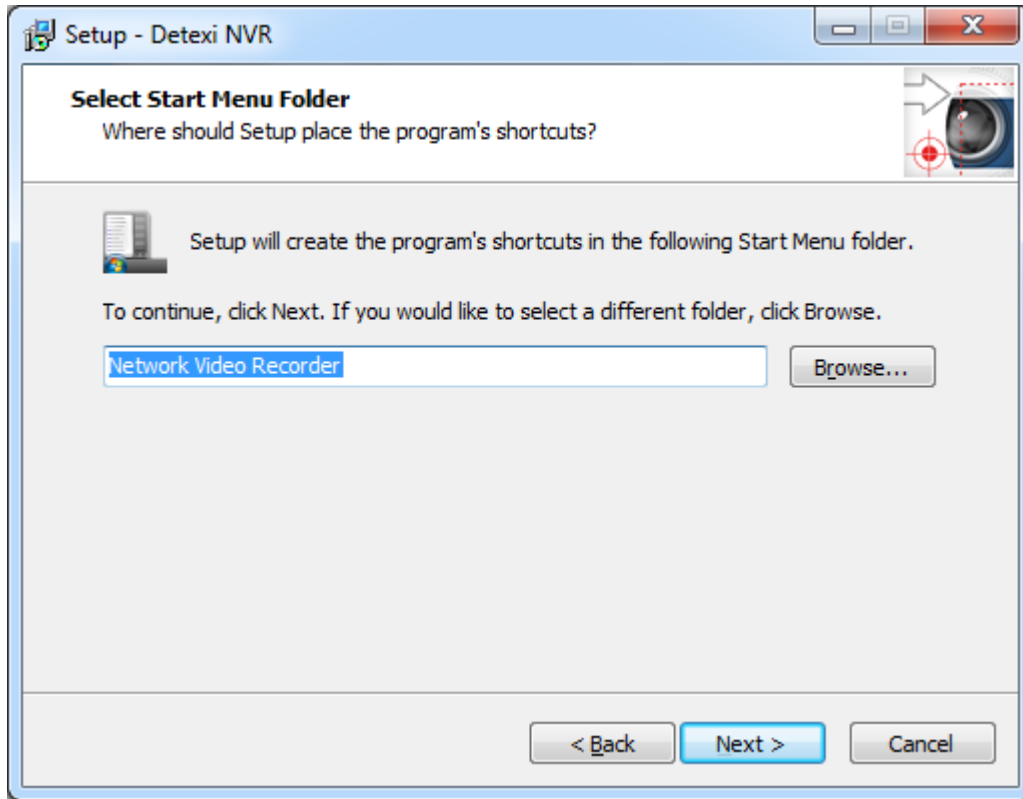
4. Select Components and click **Next**.



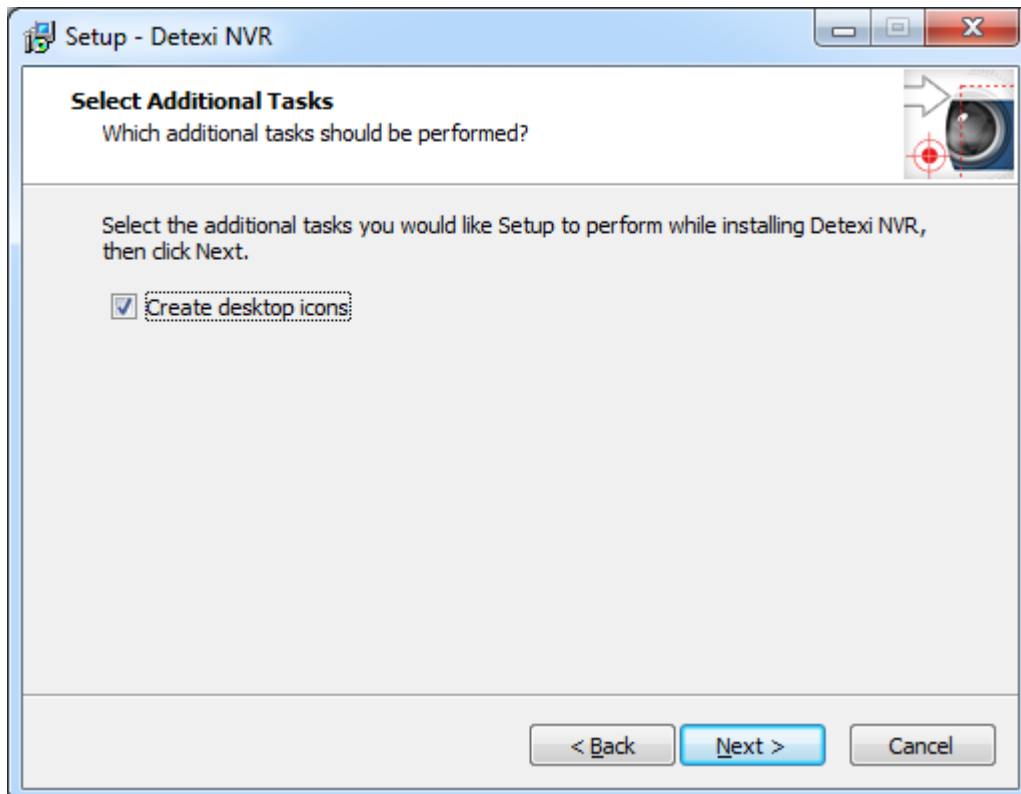
5. If the DETEXI NVR Server will be used for recording video information, just click **Next**. If you are going to use external storage — specify, first, **User Account** to start NVR services.



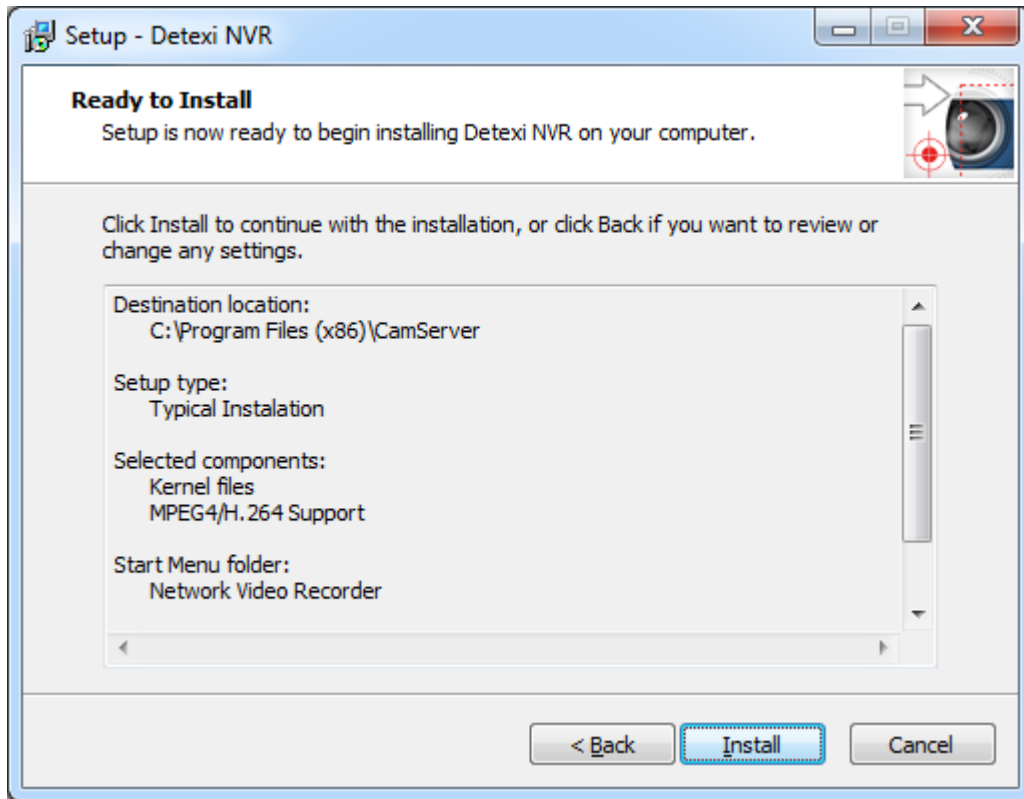
6. Create **Start Menu** folder for the program's shortcuts and click **Next**.



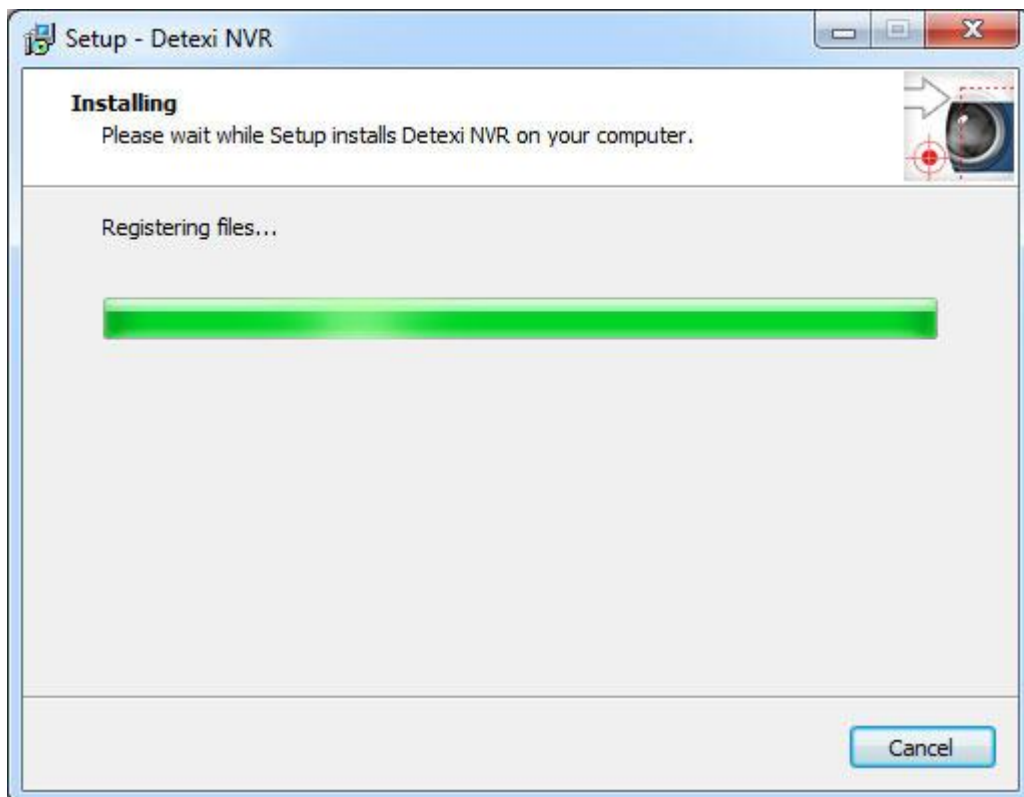
7. Check **Create Desktop Icons** checkbox and click **Next**.



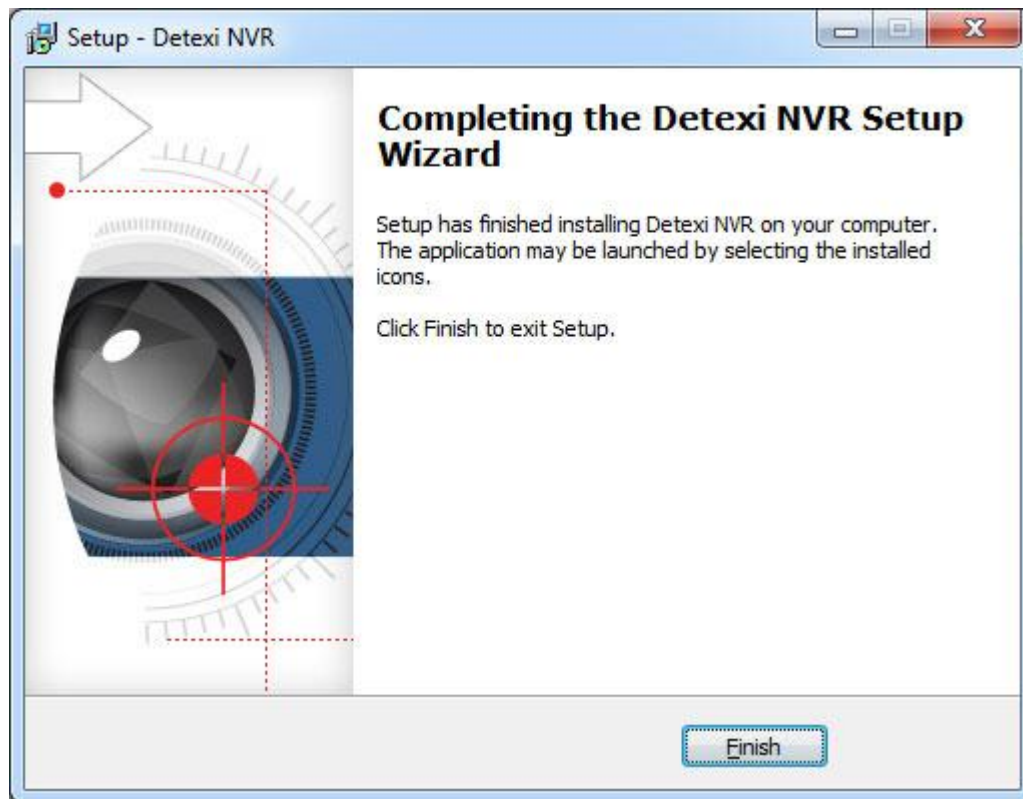
8. Click **Install** to continue with the installation, or click **Back** if you want to review /change the settings.



9. Wait until setup is complete. This can take several minutes.



10. Click **Finish** to exit Setup.



Software Components

NVR Installation

When the DETEXI NVR is installed, several applications are placed on the server PC, each with their own responsibility.

- By default, the DETEXI NVR components and files are installed in the C:\Program Files\CamServer folder (32-bit processor) or C:\Program Files(x86)\CamServer folder (64-bit processor).
- By default, NVR Control Center configuration database — **NVR.MDB** file — is located: for Windows XP — C:\Documents and Settings\All Users\Application Data\CNSG Inc\NVR; for Windows 7 — C:\ProgramData\Application Data\CNSG Inc\NVR



DETEXI NVR Control Center

DETEXI NVR Control Center is the DETEXI NVR Graphic User Interface (GUI) and serves as a tool for communication between administrator and the DETEXI NVR. Once the DETEXI NVR has been installed on your computer, the NVR Control Center allows you to start and stop the server as well as modify server settings if needed. If DETEXI NVR Server and any cameras in the system are separated by a proxy server, you may need to enter the appropriate proxy settings.

DETEXI NVR handles all communication with the cameras/video servers that are included in the system. It also handles recordings, events and user management in the system. The underlying structure of the DETEXI NVR consists of individual services, registered as Windows Services which allow to execute and organize all the tasks it is responsible for.



Local DETEXI Client

Local DETEXI Client installed automatically along with the DETEXI NVR is useful system administrator tool for testing user configuration and basic functionality. It only connects to the local DETEXI NVR, does not require the NVR services to be running, and does not require authentication (*authentication features are disabled*).



Remote DETEXI Client

Remote DETEXI Client installed automatically along with the DETEXI NVR installation enables connection to any authorized DETEXI NVR available anywhere on the Internet or corporate network for remote viewing and control. Requires NVR settings configuration and authentication.



DETEXI Archive Viewer

Installed automatically with the DETEXI NVR installation connects local and/or remote users to the DETEXI NVR recorded video (NVR archive) for video retrieval and export. For remote users permission/authentication is required.



NVR Status Checker

NVR Status Checker installed automatically with the DETEXI NVR installation has been developed for further improvement of the DETEXI Reliability System. It launches from the Start menu and allows system administrators to check the system essential functionality of the NVRs it is connected to at any given time.



Export Archive Video

Export Archive Video module included automatically with the DETEXI NVR installation allows users to export, or back up recorded video in a proprietary file format along with a proprietary player — restricted DETEXI Archive Viewer, while DETEXI Client Archive Tool and Archive Viewer export video to AVI file format. The advantages of using the native recording format are: additional security and data integrity as well as advanced playback features. Additionally, the proprietary format is more difficult to edit and can be used to preserve the chain of evidence.



NVR Executor for Media

GUI for the Alarm Server service responsible for raising alarms via the text-to-speech engine, e-mail and other mediums. Alarm Server service (Alarm Central in earlier versions) is configured as an automatic Windows service and starts at Windows startup.



Billing Information

Billing Information is a central workflow capturing module. Needs an additional license to be acquired.

Client Installation

If you have already installed DETEXI NVR on another computer you may choose to install only DETEXI Client. When the DETEXI Client is installed, several applications are placed on PC, each with their own responsibility

- By default, the Remote DETEXI Client components and files are installed in the `C:\Program Files\Detexi` folder.



Remote DETEXI Client

Remote DETEXI Client installed stand-alone on any PC enables connection to any authorized DETEXI NVR available anywhere on the Internet or corporate network for remote viewing and control. Requires NVR settings configuration and authentication.



DETEXI Archive Viewer

Installed automatically with the Remote DETEXI Client installation connects local and/or remote users to the DETEXI NVR recorded video (NVR archive) for video retrieval and export. For remote users permission/authentication is required.



Export Archive Video

Export Archive Video module included automatically with the DETEXI Client installation (DETEXI V 6.2 and higher) allows users to export, or back up recorded video in a proprietary file format from any authorized DETEXI NVR available anywhere on the Internet or corporate network, while DETEXI Client Archive Tool and Archive Viewer export video to AVI file format.



- ✓ For PDAs software sold and licensed separately. DETEXI PDA Client gives remote users simplified Remote DETEXI Client capabilities through the PDAs and Smart Phones running Windows CE 3.0, or Mobile 5.0 or higher.

Uninstall DETEXI

Uninstall DETEXI NVR

In case of full installation DETEXI software has **Network Video Recorder** entry in Windows **Start – All Programs** menu.

1. Click Windows **Start** button.
2. Chose **Network Video Recorder** from **All Programs** menu.
3. Click on **Uninstall Network Video Recorder**.

All DETEXI software components will be removed from the system.

Uninstall DETEXI Client

In case of Remote DETEXI Client installation DETEXI software has **Detexi** entry in Windows **Start – All Programs** menu.

1. Click Windows **Start** button.
2. Chose **Detexi** from **All Programs** menu.
3. Click on **Uninstall Detexi**.

All DETEXI software components will be removed from the system.