

# DETEXI NVR Status Checker

New module has been developed for the further improvement of the DETEXI Reliability System. The NVR Status Checker is part of the NVR and Client installation; it launches from the Start menu and allows system administrators to check the system essential functionality of the NVRs it is connected to at any given time.

- In the Domain Controller environment the status of all child NVRs can be checked at once.
- The Exclusive Master Users only can get the status of the remote NVRs .

## Get Selected

Administrators can get the status of one NVR, multiple NVRs (Shift, Ctrl) or all connected NVRs at once depending on the items selected from the available NVRs list (Fig 1).

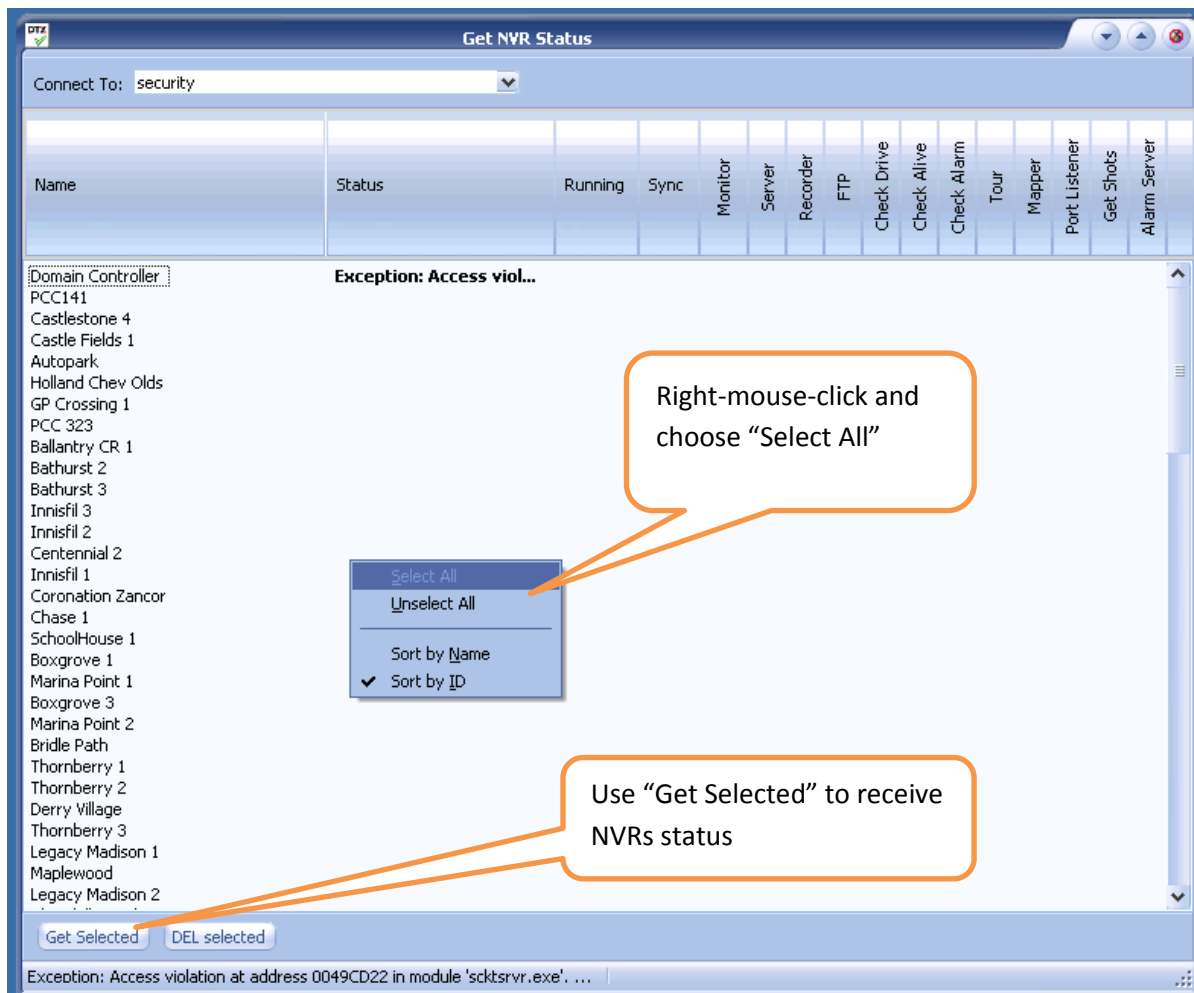


Fig 1. NVR Status Checker (Select the NVRs to get status for).

# Result Interpretation

After all the information from the selected sites is received and displayed you can easily identify the problem, if any (Fig 2).

**Status** column shows the general status of the NVR:

**OK** — the NVR is alive;

**Database or communication error** — the NVR is down;

**N files(s)** — click on the NVR name to get the list of problems (*from the last date you cleaned the status history by using **DEL Selected** button*).

**Running** and **Sync** columns' colors visualize the condition of the *Running* and *Synchronize* services on the NVR: **green** — normal; **red** — problematic.

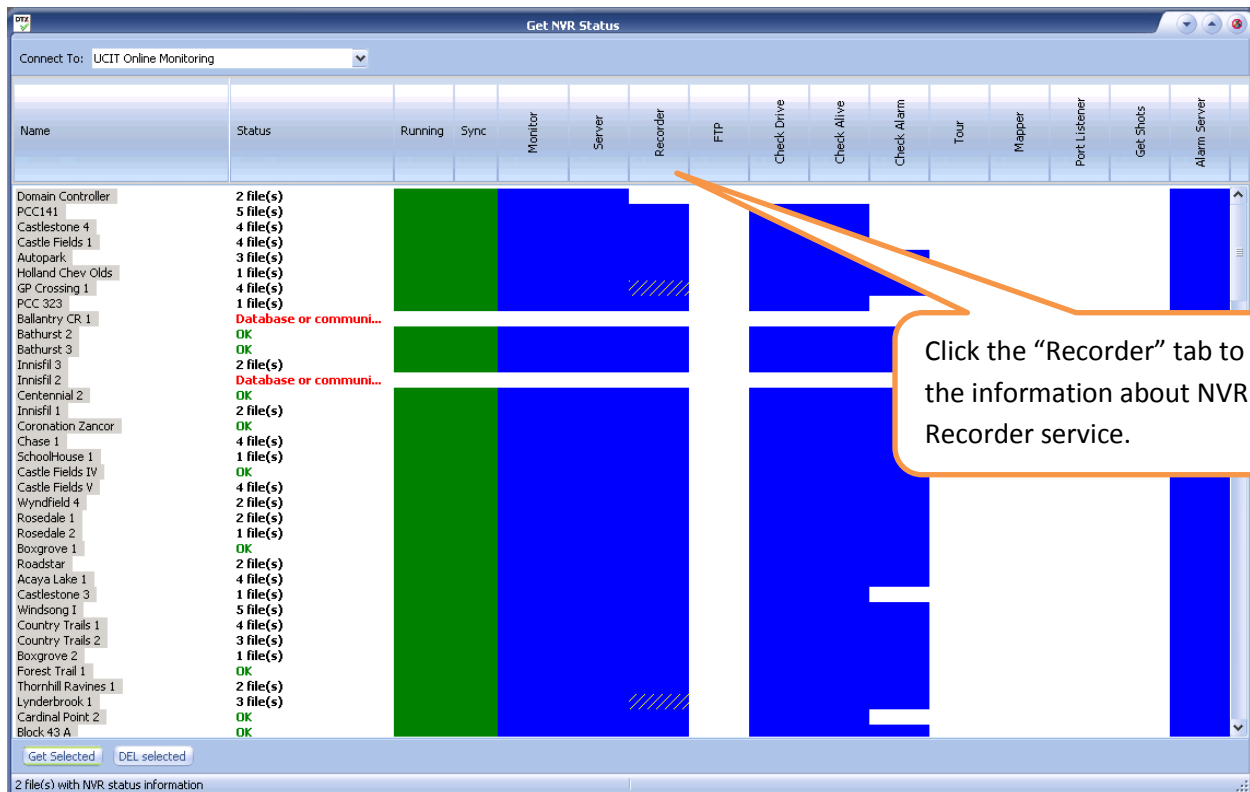


Fig 2. NVR Status Checker — Get Selected (*Interpret the selected NVRs status*).

The other columns' colors and/or patterns reflect the status of the NVR components (services) of the same name: is the NVR service running or not; is the NVR service "checked" (*check marked to be monitored by the Monitor service in the NVR Control Center – Monitor*) or "unchecked" (*i.e. not monitored*). The Monitor service is internal service to start/stop other DETEXI NVR services. It is also responsible for monitoring the health and status of all NVR Services. If any NVR service shows problematic status, the NVR connections and setting must be immediately revised.

Colors legend:

**White** – not running and not “checked” (**normal status**)

**Blue** – running and “checked” (**normal status**)

**Red** – not running but “checked” (**the service must be examined**)

**Yellow** – running but not “checked” (**normal status**) but needs to be “checked” (*to be monitored*)

Patterns legend:

**Vertical lines** – component has hung (**the service must be tested and restarted**)

**Forward slashes** – expected information not found in the archive (**the NVR connections and settings must be inspected**)

**Crosses** – expected information not found in the archive and the service has hung (**the service must be inspected and restarted**)

As an example, Figure 3 shows the status of the different NVR components.

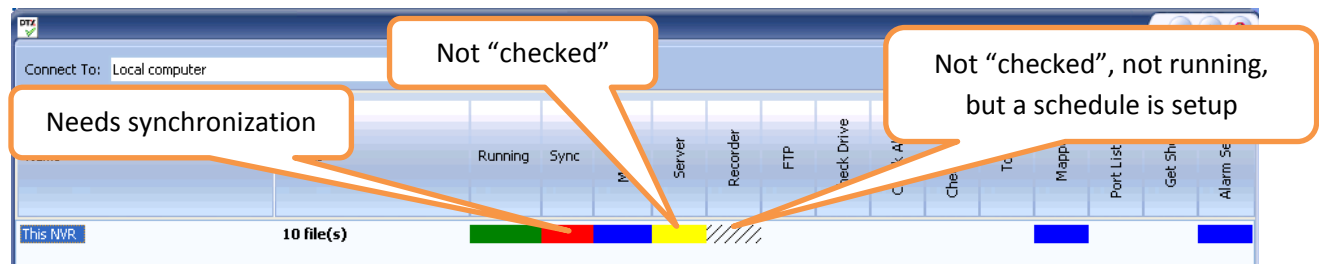


Fig 3. NVR Status Checker — *Get Selected (Columns' colors and/or patterns reflect the status of the NVR components of the same name).*